

## Firefly on-site waste management system

THE Firefly MMAD digester is a small-scale modular on-site waste management system that has been specifically designed to meet the needs of commercial waste producers.

Applications include universities, shopping centres, military facilities, remote mine sites, zoos, amusement parks, small farms, and small food and beverage factories.

With a waste throughput of 200-500TPY, the

system uses dry anaerobic digestion aerobic composting technology to produce biogas, biogas and compost, and compost.

The 20x20m modular plug-and-play solution is easy to expand with the capability for two to eight modules.

The unit is configurable in multiple ways to meet users' requirements and has an optional compost module for digestate treatment – pending con-

firmation of end-of-waste requirements.

Features include:

- Empowers businesses to divert organic waste from landfill

- Transforms organic waste into energy

- Produces a fertiliser substitute

- The combined heat and power generator has the capacity to generate electricity plus hot water

- Integrated SCADA system control panel for automated operating and

data collection.

The system is compliant with all Australian standards and is suitable for vegetable and fruit scraps, bread, rice, grains, eggshells, paper and cardboard, cooked meat, newspaper, small cooked bones, coffee grounds, and hair and nail clippings.

The product is expected to be launched by early 2023.

Visit [finnbiogas.com](http://finnbiogas.com) or phone (07) 3379 5853.

## Piggery pumps prime

PIGGERIES can produce approximately 17-18 litres of organic slurry on a daily basis, according to Berrybank Farm in Central Victoria.

Reports published by the owners suggest that for each pig on the farm, about 17 litres of liquid slurry are produced every day.

So, 1000 pigs would produce around 17,000 litres a day.

**Why Aussie Pumps cares**

The detailed report covers a total waste management system for the piggery, including grit extraction, dissolved air flotation, anaerobic digestion, cogeneration and the use of organic by-products as fertilisers for sale or to be used on the property.

This is only possible with the application of a reliable water system.

The system wound up producing 7.2 tonnes of humic solids at 35 percent dry matter, suitable for packaged garden products or fertiliser for crops.

It delivered 140,000 litres of recycled water as well as 140,000 litres of mineralised water used as fertiliser for field crop production.

It's a great story and a tremendous accomplishment.

**Why self priming?**

Aussie Pumps offering of heavy-duty cast-iron motor pumps now ranges from a 2" open-impeller semi-trash pump all the way up to a big 9000LPM 8" monster.

The pumps can be used for a wide range of a piggery applications.

Pumping effluent to aeration ponds is only one – aeration of the ponds is another.

The processes can be synchronised to provide the best in efficiencies and with the lowest environmental impact.

The Aussie Pumps range of semi-trash pumps is ideal for handling waste

laden with organic solids, even though the content is only around 1.4 percent.

That mix makes it possible to pump through self-priming Aussie 3" pumps, which handle vertical heads up to 75m.

Aussie Pumps chief engineer John Hales said, "Imagine that, a pump that can handle not only the effluent-laden liquid but can pump it over a horizontal distance that could stretch for kilometres if required."

"Alternatively, the same pump could run sprinklers or could easily be used for aeration."

Aussie Pumps range is all self-priming, which means the pump is not mounted below the surface of an effluent pit, but rather above, in an always visible position.

Having the ability to service the pump without disconnecting pipework is a massive advantage.

"We achieve that by having the pump fitted with a clean-out port designed into the bottom of the bowl below the suction port," Mr Hales said.

"The clean-out port can be opened in a matter of seconds, without the inconvenience of having to disconnect either suction or delivery hoses or pipework."

The convenience of the range is that for corrosive liquid applications, the

cast-iron pumps can be fitted with 316 stainless-steel impellers.

"It's not as expensive as you'd think and to see these big stainless open-bladed impellers fitted into the pumps gives you confidence about their ability to handle even the most corrosive and abrasive applications," Mr Hales said.

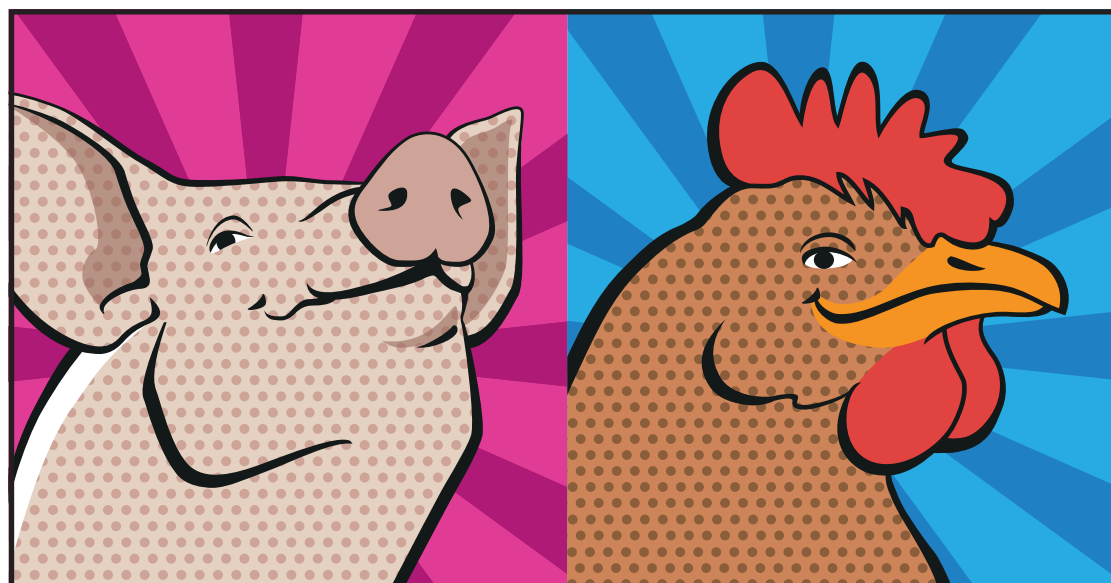
Aussie Pumps publication 'Primed for action' gives a complete run down of the full range of pumps available, including the cast-iron models in high pressure or high-flow configuration, and a wide range of pumps available for piggery applications.

These include Honda engine-powered lightweight portable trash pumps, cast 316 stainless-steel pumps that will last, and nickel aluminium bronze, which can be useful in some applications.

Aussie Pumps is also a major pressure cleaner manufacturer, building for Australian farmers in piggeries, poultry and even cropping, and cattle and sheep livestock applications.

"We know what farmers need, we know their lives have challenges and our job is to make it as easy and as safe as possible," Mr Hales said.

For further information, visit [aussiepumps.com.au](http://aussiepumps.com.au)



High

- ✓ Concentration
- ✓ Flowability
- ✓ Safety standards

- ✓ Stability
- ✓ Bioavailability
- ✓ Animal performance

**HiZox®**  
POTENTIATED  
ZINC

**CoRouge®**  
MONOVALENT  
COPPER

**Animine,**

an international & independent  
supplier of precision minerals

Exclusively distributed in Australia by

**FeedWorks**  
Performance | Through Science

Stuart Wilkinson - 0414 487 882  
David Cadogan - 0409 049 793

## Anti-slip Self Supporting Triangle Hot Dipped Galvanised Flooring

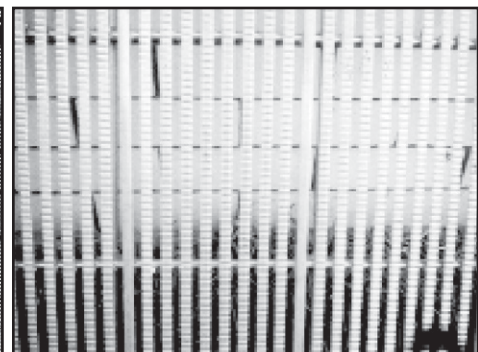
**100%**   
**Australian made**  
**in Australia**

**Excellent quality  
Concrete Slats for Piggeries**

**Galvanised flooring in all sizes up to 2.8m**



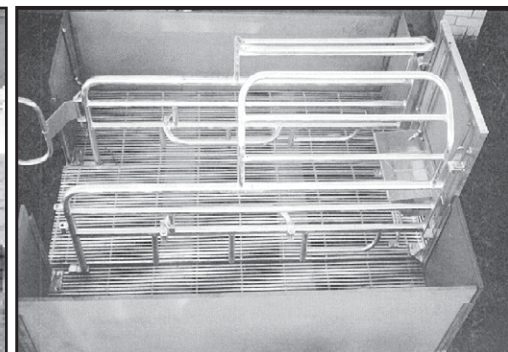
■ Farrowing and weaner crates, growers and baconer pens. ■ Feed hopper with stainless steel trough.



■ Farrowing flooring with a 10mm gap; weaners flooring with a 12mm gap; and growers flooring with a 15mm gap.



Diagonal Farrowing Crate.



Straight Farrowing Crate.

**Vereyken Brothers Pty Ltd**

Ph (02) 6644 6065

Mobile 0437 431 901 | Email [sales@verecken.com.au](mailto:sales@verecken.com.au)

2 Clark Rd, Junction Hill • PO Box 421, Grafton NSW 2460

**ALL FLOORING IS MADE TO SIZE AT NO EXTRA COST**

Head Office: Vereyken Bros. Pty Ltd  
ABN 11 003 543 548

Anytime or (02) 6644 6065  
Mobile: 0437 431 901

Victoria: Ben Slots  
Freecall: 1800 999 245

Phone: (03) 9462 4266  
Mobile: 0418 388 842